



DLA Contract
SPE8EC-D-13-0022

GSA

GSA Contract
GS-30F-0027R



HYDRAULIC TAIL, 35 TON

35HT267284



HYDRAULIC TAIL, 35 TON

2 AXLE, MAXIMUM PAYLOAD 70,000 LBS



HIGH QUALITY STEEL

NuStrength™
HIGH PERFORMANCE STEEL

NuStrength™ HR100

HIGH PERFORMANCE STEEL

ULTRA HIGH STRENGTH SHEET
100 KSI / 700 MPA SHEET STEEL COMPARISON

Melted and Manufactured in the USA

Constructed with T-1 100K PSI yield strength Steel. The High Tensile Steel ensures the designed camber is retained, and allows for a longer product service life.

HYDRAULIC TAIL



The Hydraulic Tail is a bi-fold that extends to allow easy loading of equipment with a very low load angle. In the transportation mode the flip under ramp folds into the beaver tail for a shorter overall trailer length.

WINCH SYSTEM



Available options for 12,000 to 30,000 lb hydraulic winch system. Mounted front and center of the upper deck. Standard cable length of 85' with shackle. Cable length options are available.

HYDRAULIC RAMPS



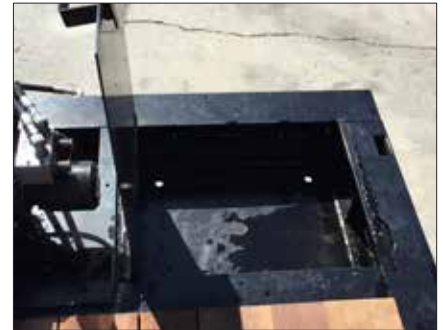
The Hydraulic Ramps extend to allow easier loading on to the upper deck.

KEY HOLES FOR TIE DOWNS



Double slotted key holes gives you more tie-down angles for securing load.

STORAGE COMPARTMENT



Flush mounted compartments to store your loose items.

WHEEL OPTIONS



All Globe trailers come with standard HUB piloted disc wheels. Wheels are also available in all Aluminum or Outer Aluminum.

DROP DECK DESIGN



The drop deck design allows for taller loads.

HEAD RACK



Optional detachable steel bulkhead, 48" high with optional work lights.

DECKING OPTIONS



Oak: Standard.
 Apitong: Best strength to weight ratios of natural woods.
 Rubber: Composite which is impervious to fluids, mud, oil and UV rays.

STEMCO WHEEL WARRANTY



5 year wheel end warranty.
 Guardian wheel seals, Pro-Torq spindle nuts and Sentinel hub caps.

LANDING GEAR



2 speed Landing Gear, allows for 160,000 lbs static load.

WINCH CONTROLS



Controls Located on the driver side of the neck.

COLOR CODED HOSES



Color coded air hoses allow for easy trouble shooting and maintenance.

COLOR OPTIONS



Globe Trailers can powder coat to the color of your choice

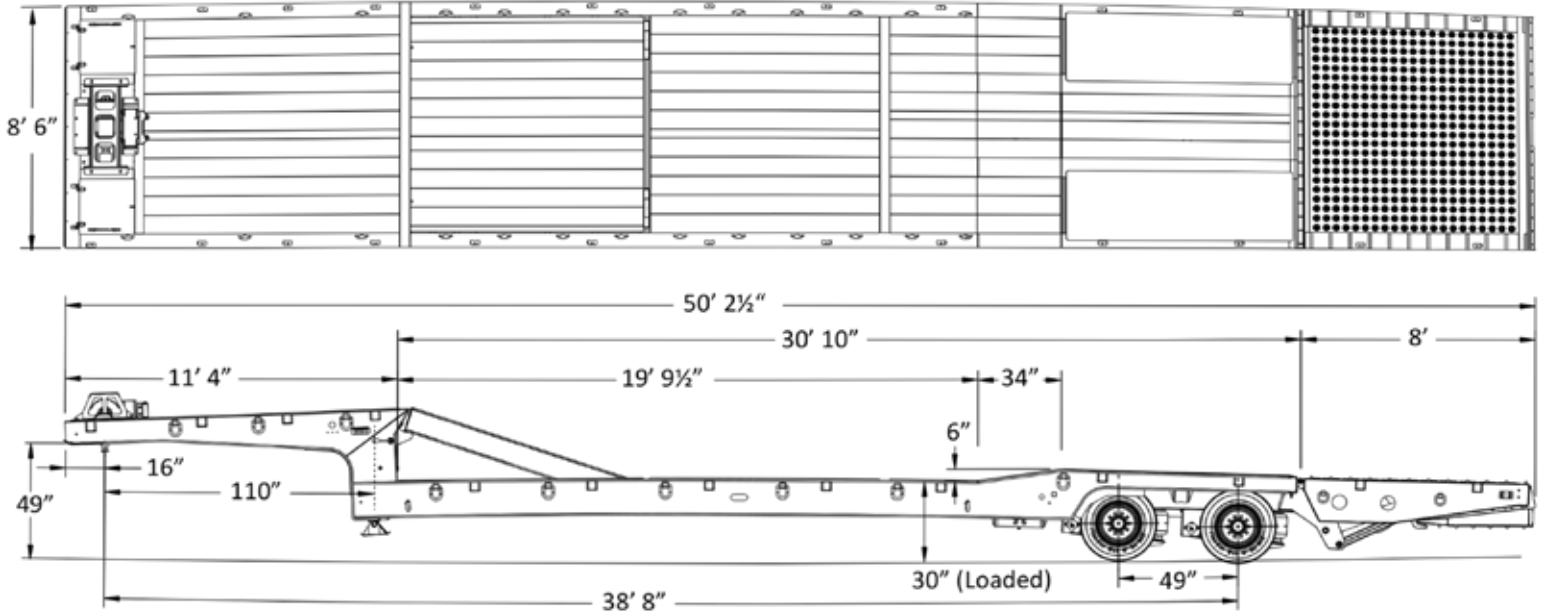
POLYURETHANE VS RUBBER BUSHING



Reduced Maintenance	Increased Maintenance
Increased Trailer Lifetime	Needs Replacement
Increased Trailer Performance	Reduces Trailer Performance
Weather Resistant	Damaged from Weather



All Globe Trailers are 100% powder coat finished. The entire process takes place at Globe's manufacturing facility. This eliminates the possibility of contamination occurring in transit between process phases. The process starts with sandblasting the trailer to near white, preheating the trailer steel in a dedicated, gas fired oven to optimum bonding temperature and applying an electrostatically charged zinc rich primer. The trailer then goes back in the oven to allow the primer to bond. After the primer has bonded, a top coat chosen from one of Globe Trailers' 188 color options is applied before once more going back in the oven to cure. The result is a durable, easily cleaned finish that protects the trailer from corrosion and ensures a long service life.



Trailer Model: GTFH352-48-20

Weight: Apx. 20,750 ± lbs

Overall Length	Overall Width	Gooseneck Length	Load well Length	Load well Height	Swing Clearance	5th Wheel Height	Hydraulic Tail	Flip Under Ramp
50' 2 1/2"	8' 6"	11' 4"	19' 9 1/2"	30" (Loaded)	110"	49"	8'	4'

Main Deck	
Main Beam	15" fabricated I-Beam.
Crossmembers	10" on loadwell & 4" on neck & rear deck
Spacing	12"
# Of D-Rings	11 per side
Stake Pockets	13 per side
Decking/Flooring	
Main Decking	1.75" Apitong flooring
Electrical	
Lights	LED Plus 2 - Rear Stobes
Connector	7 Way SAE Connector
Tires & Rims	
Tires	235/70R X 17.5 "H"
Rims	6.75" X 17.5" Aluminum wheels
Hydraulics	
Wet-line setup for tractor.	
Finish	
Sandblast & Powder Coat	
Mud Flaps & Reflective Tape	
Flag Holders	

Axles, Suspension, & Running Gear	
# of Axles	2
Axle Spacing	49"
Axle Capacity	25,000lbs
Brakes	12 1/4 X 7 1/2
ABS	4S2M
Axle 1	Fixed Type 30/30 ABS
Axle 2	Fixed Type 30/30 ABS
Air ride suspension.	
Auto Dump	
Gooseneck	
King Pin Style	Fixed
King Pin Setting	16"
Swing Clearance	110"
5th Wheel Height	49"
King Pin	2" Fixed

Dealer: